



15 Creer Street Bonnell's Bay NSW

7 2 2

Positioned in a highly sought after street, in close proximity to the lakes edge with water views from the sight, this R3 medium density residentially zoned parcel, offers the discerning investor the opportunity to develop within the zoning with an encouraging 20 metre frontage and an overall area of 1429 m2 spread across two titles.

Currently on site are two dwellings, the front dwelling is a four-bed, one-bathroom home with an open plan living area and a carport. The back dwelling is a cute three-bedroom cottage with a practical floor plan. It has a lazy veranda that catches the morning sun and offers views of the lake.

These homes will allow for many more years of rental return with potential of approx. \$830 to \$880 per week combined. This level of return will buy you time as you consider further developing the site or even allowing you to

Price : \$ 1,087,000
Land Size : 1429 sqm
View : <https://www.wilsonbritten.com/sale/nsw/lake-macquarie-west/bonnells-bay/residential/home/7599056>



Tom Gregg
02 4970 5545

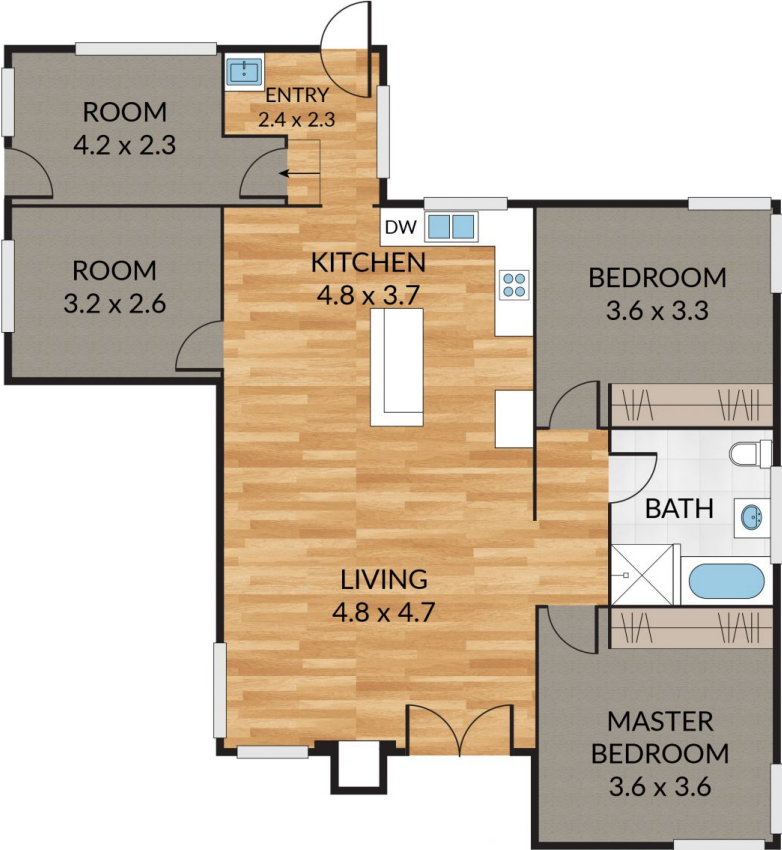


Matthew Wilson
02 4970 5545

Internal 99m²

2 x  1 x 

15 Creer Street, **Bonnells Bay** 
NORTH

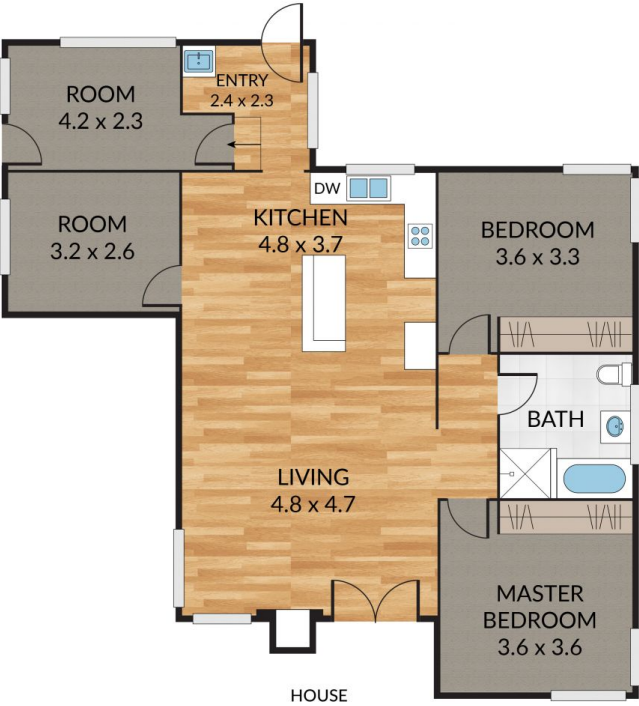


wilsonbritten NOTE: Every precaution has been taken to verify the accuracy of the above details. However, prospective purchasers are advised to make their own enquiries.

Internal 154m² External 16m² Total 170m²

2 x  1 x 

15 Creer Street, **Bonnells Bay** 
NORTH



wilsonbritten NOTE: Every precaution has been taken to verify the accuracy of the above details. However, prospective purchasers are advised to make their own enquiries.