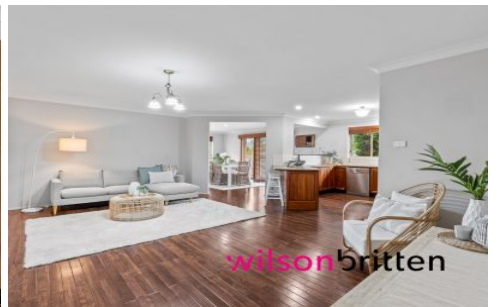


# wilsonbritten



## 13 Kona Crescent Bonnells Bay NSW

5 2 2

This spacious 5-bedroom home is ideally located for convenient yet peaceful lakeside living.

Carefully positioned on a generous lot of approximately 750m<sup>2</sup>, this property offers side access for off-street parking of the boat or caravan.

The backyard is spacious, and provides ample room to accommodate your wishes, such as an extra shed and/or swimming pool, or simply plenty of space for kids, dogs and gardens.

The plan of the home has been carefully chosen so that the informal living areas take advantage of a north-east aspect for winter warmth and cooling lake breezes in the summer. These living areas also allow an easy flow between inside and outside living.

**Price** : \$ 920,000  
**Land Size** : 750 sqm  
**View** : <https://www.wilsonbritten.com/sale/nsw/lake-macquarie-west/bonnells-bay/residential/home/7808139>



**John Britten**  
0409 681 606



**Tom Gregg**  
02 4970 5545

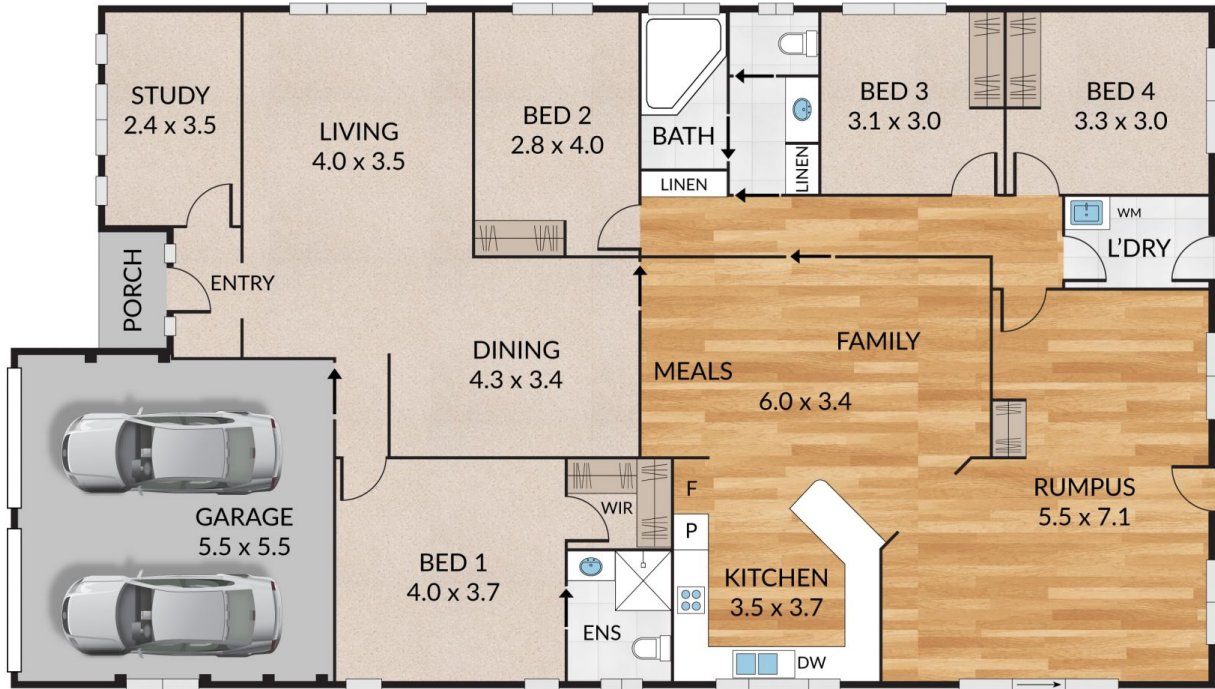
Internal 227m<sup>2</sup> External 2m<sup>2</sup> Total 229m<sup>2</sup>

13 Kona Crescent, **Bonnells Bay**



NORTH

4 x 2 x 2 x



**wilsonbritten**

NOTE: Every precaution has been taken to verify the accuracy of the above details. However, prospective purchasers are advised to make their own enquiries.