



19 Waverley Road MANNERING PARK NSW

3 1 2

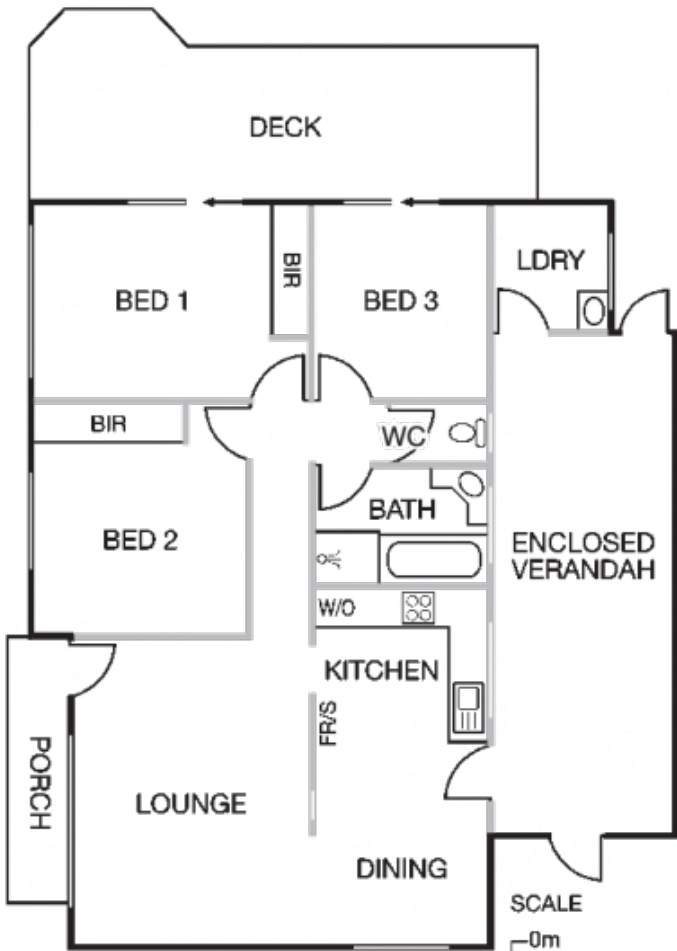
If you are searching for quality, style and a place to relax this home has all the right ingredients. Located just 124 metres to the shores of Lake Macquarie and walking distance to transport, schools and shops this home is truly in a top spot. You can enjoy boating, fishing, sailing and skiing in a moments notice or enjoy entertaining in a private setting.

Type : House
Land Size : 506 sqm
View : <https://www.wilsonbritten.com/sale/nsw/central-coast-region/manning-park/residential/house/8473811>

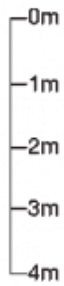
- Open plan living leading to the dining.
- Timber kitchen featuring plenty of storage and dishwasher.
- Generous bedrooms with built-ins in 2.

[For full version visit the website](https://www.wilsonbritten.com)

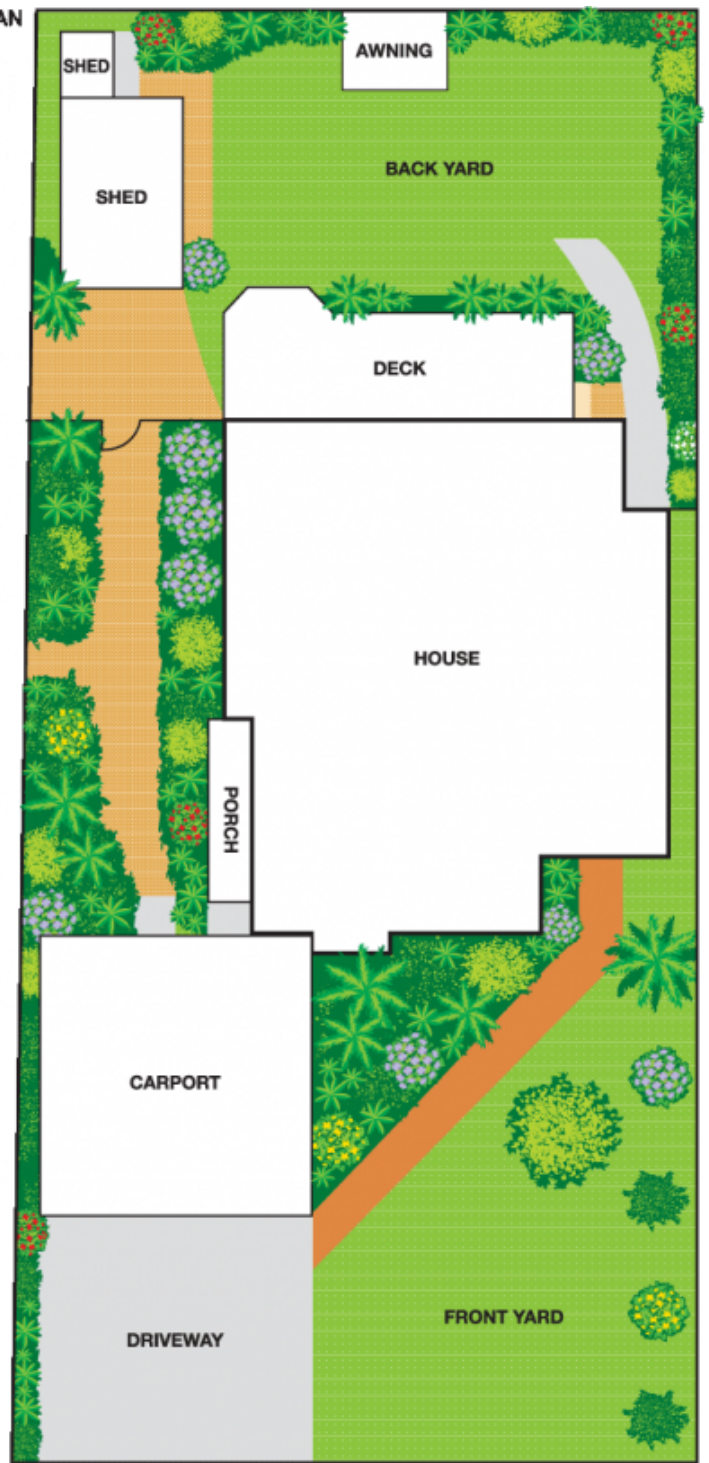
FLOOR PLAN



SCALE



SITE PLAN



SCALE



Disclaimer: All measurements in metres taken from furthest point and drawn to scale approximately. Floor plan should not be relied on for any specific detail, no liability will be accepted. Site plan, trees and gardens are not accurate. By LCdesign 0412 211 664