



11 Bambara Avenue SUMMERLAND POINT NSW

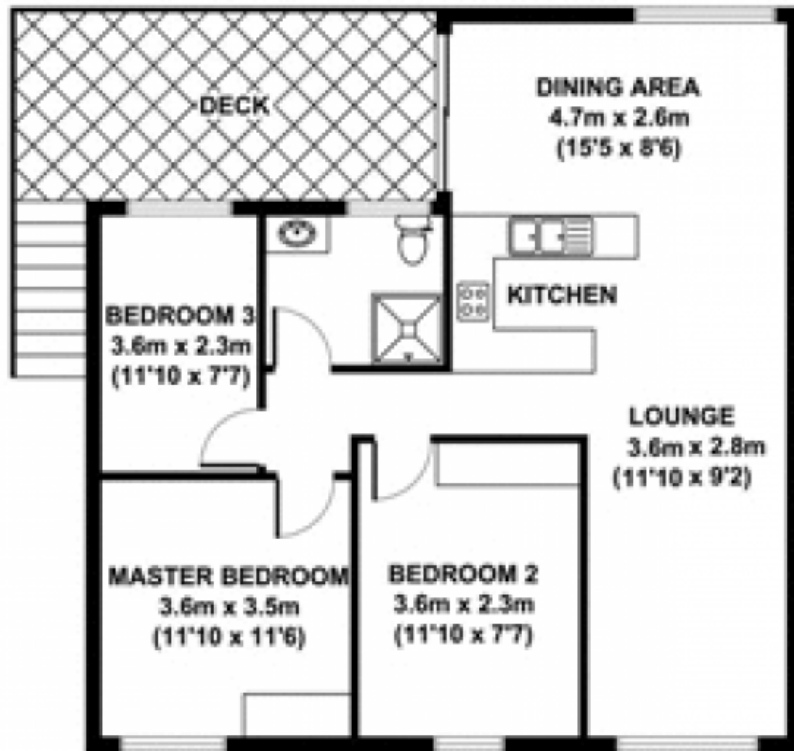
3 2 2

This ideal first home or investment sits tall in one of Summerland Point's most sort after locations within walking distance to the popular Sandy Beach Reserve where you can ski, fish, swim or enjoy a picnic on the edges of Lake Macquarie. An inspection of this one is a must and would suit first home buyers and investors alike.

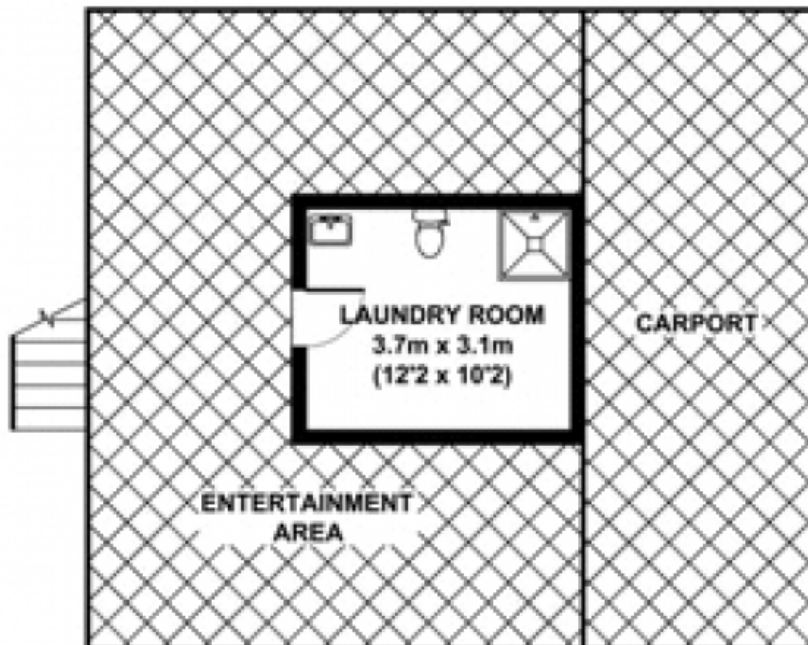
Type : House
Land Size : 506 sqm
View : <https://www.wilsonbritten.com/sale/nsw/central-coast-region/summerland-point/residential/house/8473843>

- Three bedrooms, two with built-in-robos
- Open plan living featuring polished timber floors and air conditioning.
- Modern kitchen and bathroom.
- Back deck overlooking the level back yard.

[For full version visit the website](https://www.wilsonbritten.com)



LEVEL 1
GROSS INTERNAL
FLOOR AREA 83 SQ M



GROUND FLOOR
GROSS INTERNAL
FLOOR AREA 11 SQ M

APPROX. GROSS INTERNAL FLOOR AREA 94 SQ M / 1012 SQ FT

Whilst every attempt has been made to ensure the accuracy of the floorplan contained here, measurements of doors, windows and rooms are approximate and no responsibility is taken for any error omission or mis-statement. These plans are for representation purposes only and should be used as such by any prospective purchaser. The services, systems and appliances listed in this specification have not been tested and no guarantee as to their operating ability or their efficiency can be given.