






14 Silver Cup Close COORANBONG NSW

4  2  6 

Located in one of the most sought after areas of Cooranbong, this 2.5-acre residence offers opportunities quite rare in today's market.

One of the best features of the land is its dual access providing a private, well-presented entrance to the property from Silver Cup Close and a secondary access point from Mathews Valley Road that could be used to access all your shedding.

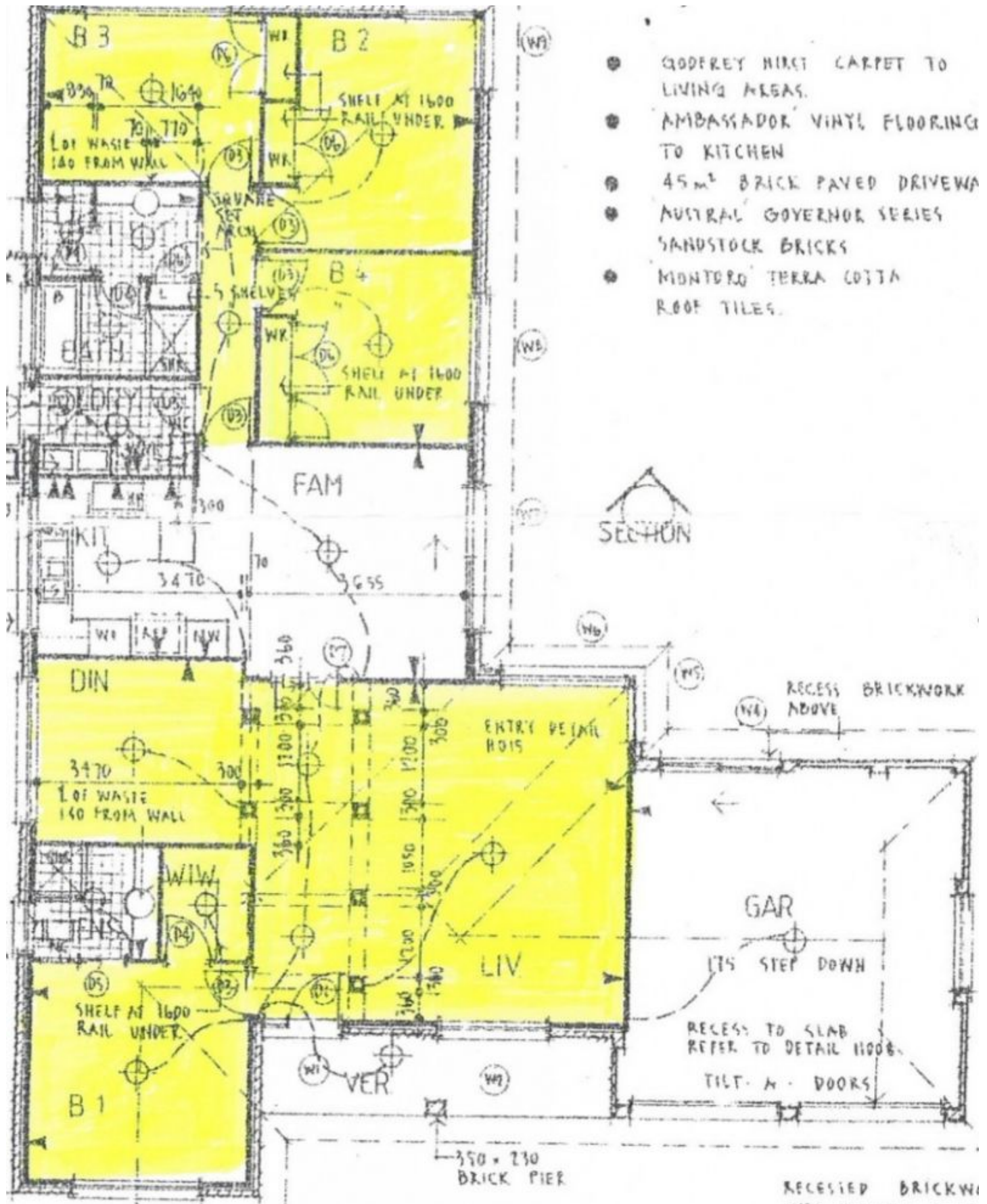
The grounds have been perfectly manicured and provide a healthy balance of sun-soaked open land and trees providing shade, whereas the home has been positioned to take full advantage of the sun and blissful easterly breezes. Features internally include four bedrooms all with built-ins, bathroom and ensuite/walk-in robe to the main. There are formal living and dining areas plus informal dining with

Type : House
Land Size : 10117.1 sqm
View : <https://www.wilsonbritten.com/sale/nsw/lake-macquarie-west/cooranbong/residential/home/8473936>



Tom Gregg
02 4970 5545

[For full version visit the website](https://www.wilsonbritten.com)



- GODFREY HIRCI CARPET TO LIVING AREAS.
- AMBASSADOR VINYL FLOORING TO KITCHEN
- 45m² BRICK PAVED DRIVEWAY
- AUSTRAL GOVERNOR SERIES SANDSTOCK BRICKS
- MONTORO TERRA COTTA ROOF TILES.

SECTION

RECESS BRICKWORK ABOVE

GAR
175 STEP DOWN

RECESS TO SLAB REFER TO DETAIL 1100B
TILT-A-DOORS

350 x 230 BRICK PIER

RECESSED BRICKWORK