

wilsonbritten



6 Courin Drive COORANBONG NSW

4  2  2 

Take the guess work out of building your own home and walk right in to this near-new executive family home. Located in the popular Watagan Park Estate on a corner block with option of side access. The home boasts an easy-flow, functional floor plan with open plan living spaces and multiple living zones. The beautifully styled, north facing family residence is filled with lots of natural light and bound to excite families looking for a spacious home with luxury appointments.

Features include:

- Modern kitchen with stone bench-tops, stainless steel appliances, canopy rangehood, dishwasher and soft-close drawers
- Butler's pantry

Type : House
Land Size : 744 sqm
View : <https://www.wilsonbritten.com/sale/nsw/lake-macquarie-west/cooranbong/residential/home/8474067>

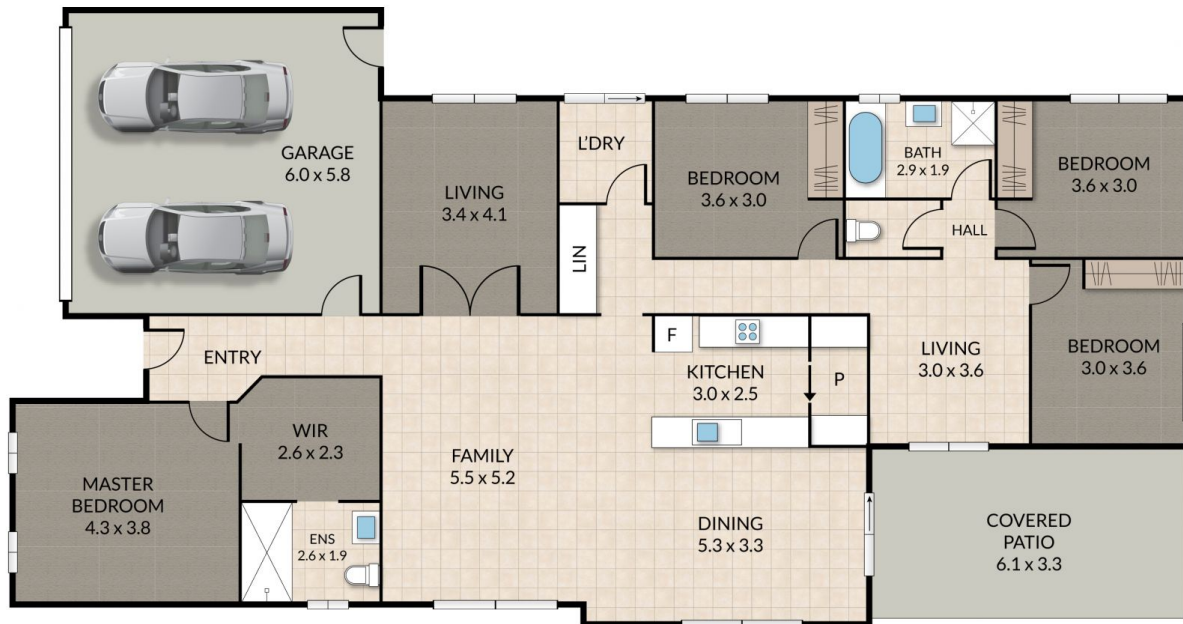
[For full version visit the website](https://www.wilsonbritten.com)

<https://www.wilsonbritten.com>

Internal 186m² External 20m² Total 206m²

6 Courin Drive, **Cooranbong**

4X  2X  2X 



WILSONBRITTEN

NOTE: Every precaution has been taken to verify the accuracy of the above details. However, prospective purchasers are advised to make their own enquiries.