




wilsonbritten



31 Martinsville Road COORANBONG NSW

6  2  2 

It's not often that a homestead such as this comes along offering so much! Set on a massive 1541m2 (approx.) block in a private and quiet location sits this ultra-spacious 6bed, 2bath home.

Perfectly designed to retreat from the hustle and bustle of life, this immaculate, executive family home has it all, offering easy family living and seamlessly marrying the indoor to the outdoor.

The impressive floorplan includes six bedrooms and multiple living areas; providing space and privacy for all. The expansive, country-style kitchen features a gas cooktop, walk-in pantry and appliances cupboard and flows effortlessly into the informal family dining and living zone. In addition, there's a rumpus room for the children and a large

Type : House
Land Size : 1541 sqm
View : <https://www.wilsonbritten.com/sale/nsw/lake-macquarie-west/cooranbong/residential/home/8474081>

[For full version visit the website](https://www.wilsonbritten.com)

<https://www.wilsonbritten.com>

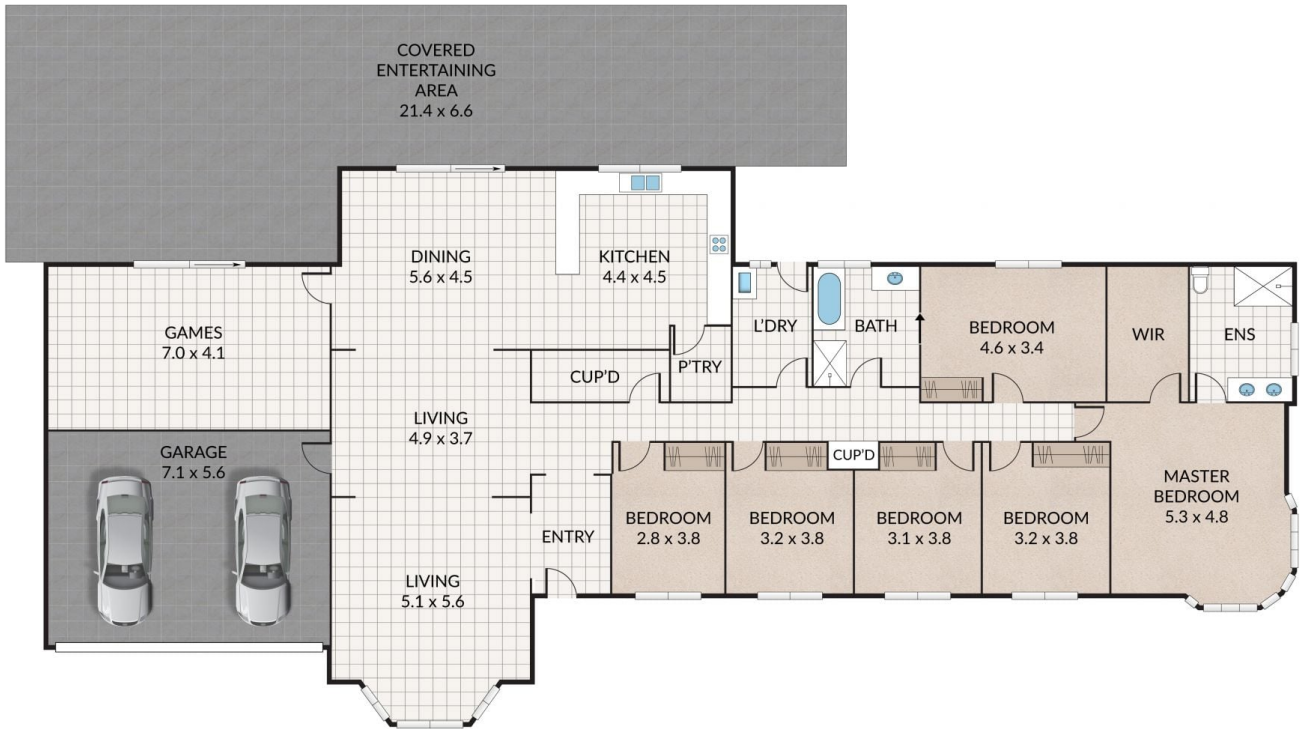
Internal 279m² External 145m² Total 424m²

31 Martinsville Road, **Connranbong**



NORTH

6 x 2 x 2 x



WILSONBRITTEN

NOTE: Every precaution has been taken to verify the accuracy of the above details. However, prospective purchasers are advised to make their own enquiries.