



## 10 Meyers Crescent COORANBONG NSW

4 1 2

Located in an extremely convenient position in a well-regarded street, this fantastic home is ideal for the growing family with multiple living areas, 4-bedrooms and a great sized backyard.

A pleasant stroll to shops, cafes, parks, medical services, public transport and other essential services as well as Avondale College, and a short drive to public and private schools, the Morisset mainline train station and the M1; this solidly built family home will hold plenty of appeal to any first home buyer, young family or investor.

Sitting on a generous 752m<sup>2</sup> (approx.) block, there's a spacious living room, a kitchen that looks out across the vast backyard and an open dining room, creating a perfect

**Type** : House  
**Land Size** : 752 sqm  
**View** : <https://www.wilsonbritten.com/sale/nsw/lake-macquarie-west/cooranbong/residential/house/847412>



**Tom Gregg**  
02 4970 5545

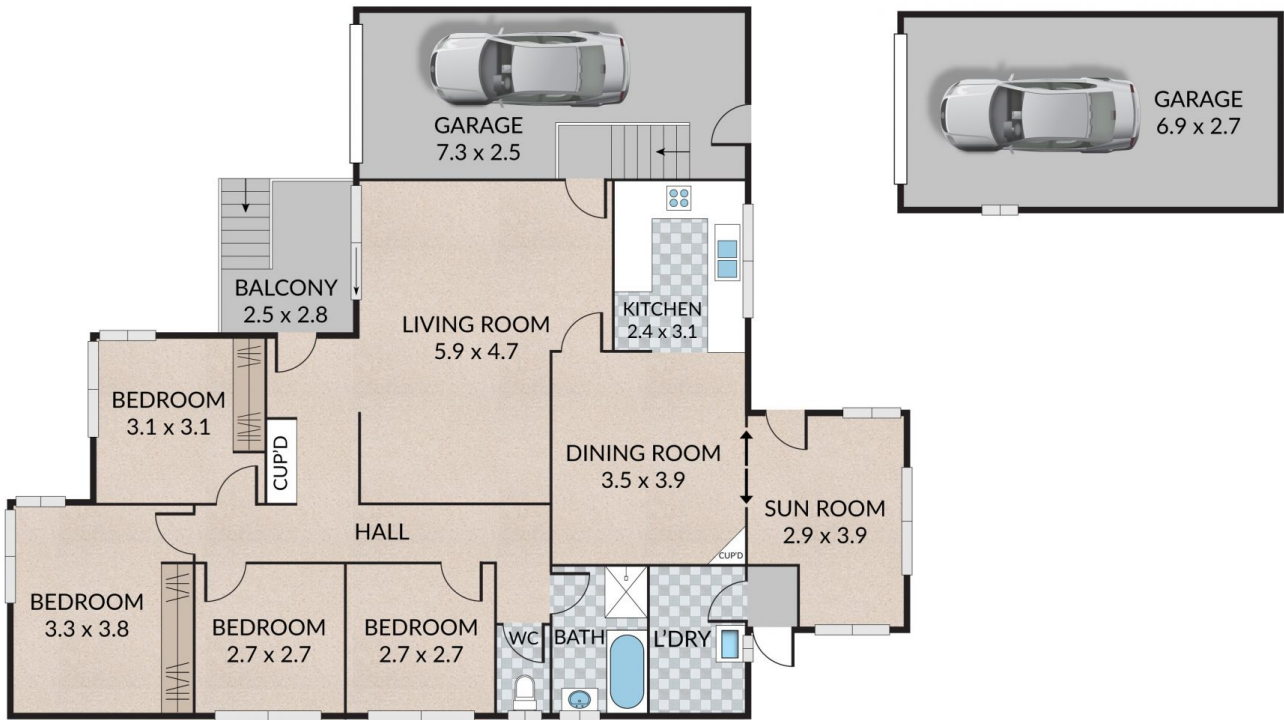
[For full version visit the website](https://www.wilsonbritten.com)

Internal 128m<sup>2</sup> External 55m<sup>2</sup> Total 183m<sup>2</sup>

10 Meyers Crescent, **Cooranbong**



4 x 1 x 2 x



**WILSONBRITTEN**

NOTE: Every precaution has been taken to verify the accuracy of the above details. However, prospective purchasers are advised to make their own enquiries.