

wilsonbritten



15 Summerland Road SUMMERLAND POINT NSW

5 🏠 2 🚗 2 🚗

Beautifully renovated from top to tail, this large family home is in a popular location in Summerland Point, perfectly positioned on a 487m² (approx.) block. So much to offer - an open plan design, a multitude of living areas and plenty of outdoor living space - without question, this would have to be the perfect home for a growing family. With French Doors seamlessly marrying the indoor to the outdoor, winter sun and cool summer breezes, this property offers a lakeside lifestyle without compromise.

Inside reveals so much; beautifully renovated to the nth degree, the clever layout consists of separate casual and formal spaces and an open plan kitchen, all offering great space and options for the family. At the hub of the home stands the beautiful new kitchen, an entertainer's dream

[For full version visit the website](https://www.wilsonbritten.com)

Type : House
Land Size : 487 sqm
View : <https://www.wilsonbritten.com/sale/nsw/central-coast-region/summerland-point/residential/house/8474139>



Tom Gregg
02 4970 5545

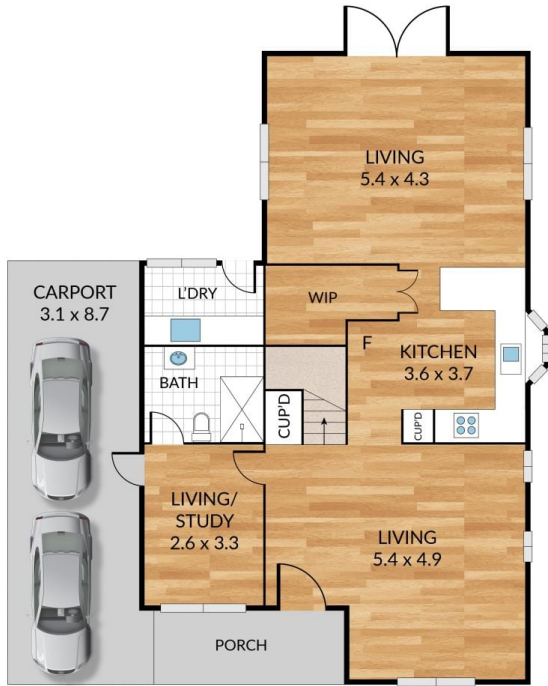
<https://www.wilsonbritten.com>

Internal 170m² External 30m² Total 200m²

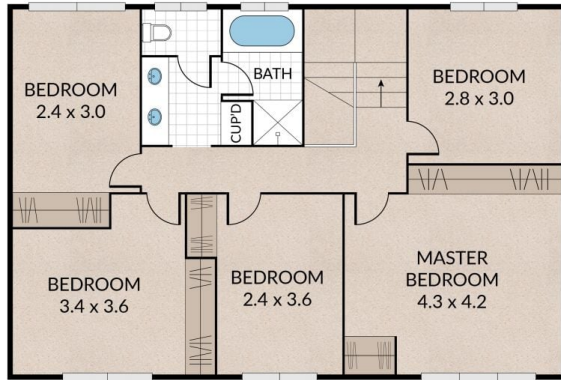
15 Summerland Road, Summerland Point



5 x 2 x 2 x



GROUND FLOOR



FIRST FLOOR

WILSONBRITTEN

NOTE: Every precaution has been taken to verify the accuracy of the above details. However, prospective purchasers are advised to make their own enquiries.