



21 Pillapai Road BRIGHTWATERS NSW

5 🛏 3 🚿 2 🚗

Prepare to be swept away upon entering this breathtaking home. Offering unparalleled style and sophistication along with the ultimate blend of indoor/outdoor living, this majestic residence will not disappoint. Nestled on a premium 1113m² block, 21 Pillapai sit across the road from luxury waterfront homes of a similar style in Lake Macquarie's popular suburb of Brightwaters and is an easy 250m walk from the water's edge.

The grandeur of this family home is impressive, from the imposing entry foyer showcasing a modern & sleek staircase through to the open plan living areas and spectacular rear back yard. An elegant formal lounge and dining room boasts phenomenal spacious clean lines with high ceilings & exquisite decor.

[For full version visit the website](https://www.wilsonbritten.com/sale/nsw/lake-macquarie-west/brightwaters/residential/ho-use/8474148)

Type : House
Land Size : 1113 sqm
View : <https://www.wilsonbritten.com/sale/nsw/lake-macquarie-west/brightwaters/residential/ho-use/8474148>



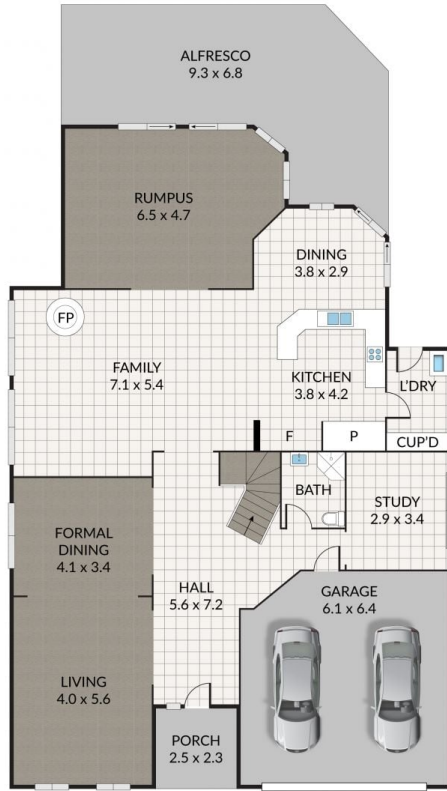
Tom Gregg
02 4970 5545

Internal 388m² External 64m² Total 452m²

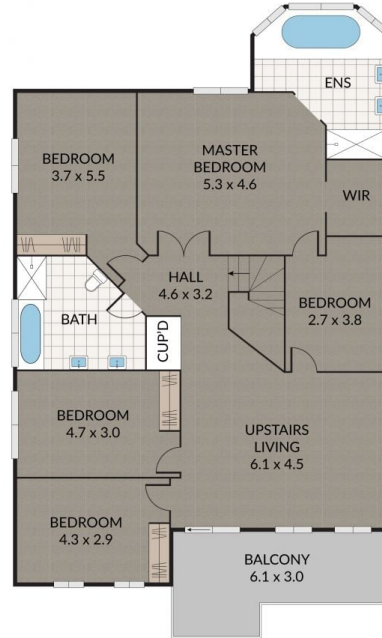
21 Pillapai Road, **Brightwaters**



5 x 3 x 2 x



GROUND FLOOR



FIRST FLOOR

WILSONBRITTEN

NOTE: Every precaution has been taken to verify the accuracy of the above details. However, prospective purchasers are advised to make their own enquiries.