

## 12 Pillapai Road BRIGHTWATERS NSW

3  1  1 

Positioned on the highly sought after Bardons Bay with clean deep anchorage at your doorstep, this (approx.) 1,243m<sup>2</sup> level allotment with original weekender cottage is being offered for the first time in over 30years.

Offering a world of potential to many differing buyers, the current building could be easily renovated and enjoyed, maintaining what could never to be achieved again, being amazing proximity to the waters edge.

For those looking at a knock down and rebuild, moving away from the current building line will open up further the view, especially with a sympathetic design allowing for more winter sun and a wider vista due to the positioning of the neighboring homes and the north to south aspect of the

**Type** : House  
**Land Size** : 1243 sqm  
**View** : <https://www.wilsonbritten.com/sale/nsw/lake-macquarie-west/brightwaters/residential/ho use/8474189>



**Matthew Wilson**  
02 4970 5545

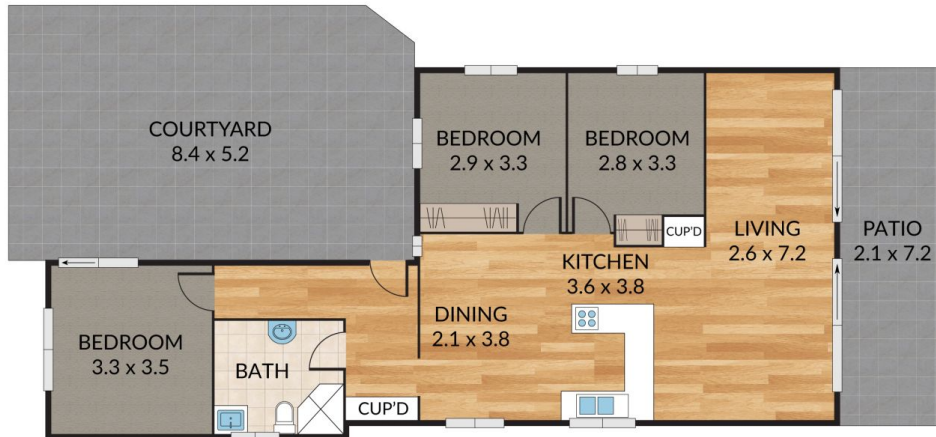
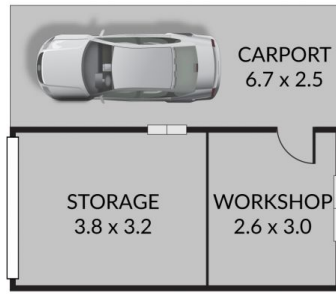
[For full version visit the website](https://www.wilsonbritten.com)

Internal 90m<sup>2</sup> External 98m<sup>2</sup> Total 188m<sup>2</sup>

12 Pillapai Road, **Brightwaters**



3 x 1 x 1 x



**WILSONBRITTEN**

NOTE: Every precaution has been taken to verify the accuracy of the above details. However, prospective purchasers are advised to make their own enquiries.