






286 Freemans Drive COORANBONG NSW

4  2  2 

New to the market is this unique creekfront reserve cottage that slopes gradually northward towards Dora Creek. This massive parcel measures approx. 2846 m2 Including part of the driveway. The home presents a fantastic opportunity to restore the existing 4-bedroom, 2-bathroom dwelling into a perfect family home and live-in waterfront serenity in an idyllic location. With large open plan tiled kitchen which leads into the lounge /dining area with polished timber floors and split air-conditioning unit. A peaceful view awaits and the sound of chirping birds, on the sun drenched north facing verandah.

Under the house there is parking and storage. With a separate garage and plenty of space for pool, shed and any other recreation activity you can dream. Conveniently

[For full version visit the website](https://www.wilsonbritten.com)

Type : House
Land Size : 2846 sqm
View : <https://www.wilsonbritten.com/sale/nsw/lake-macquarie-west/cooranbong/residential/home/8474190>



John Britten
0409 681 606

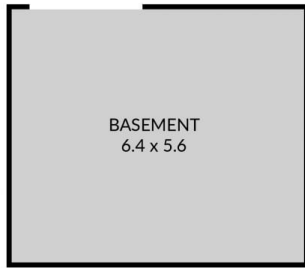
Internal 163m² External 109m² Total 272m²

286 Freemans Drive, Cooranbong

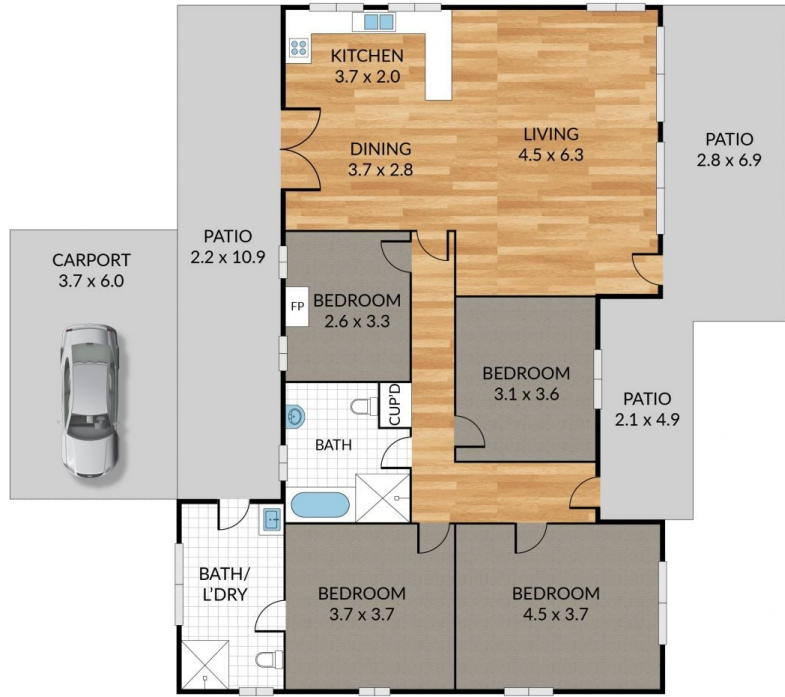
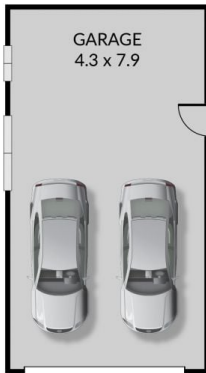


NORTH

4 x 2 x 3 x



BASEMENT



GROUND FLOOR

WILSONBRITTEN

NOTE: Every precaution has been taken to verify the accuracy of the above details. However, prospective purchasers are advised to make their own enquiries.