



1 Lakeside Close BONNELLS BAY NSW

4  2  2 

It was over 30 years ago that the current owners of this attractive residence had the unique opportunity to take the pick of all the lots in what was then a New Estate. Selecting a Road Front Waterfront Reserve lot, they then designed a unique home planned to take full advantage of the prevailing northern aspect and expansive Lake Views.

With established gardens and mature trees, the property sits sympathetically on the corner lot, allowing the home to focus on the lake view at the front and the side street giving stress free access to the huge double garage with incorporated workshop which does not impinge on any carparking. Other features include, formal entry, formal lounge and dining, recently renovated expansive kitchen that interacts with the informal dining, all of which spills onto the front patio. On the lower level there is also the

Type : House
Land Size : 582 sqm
View : <https://www.wilsonbritten.com/sale/nsw/lake-macquarie-west/bonnells-bay/residential/ho-use/8474234>



Matthew Wilson
02 4970 5545

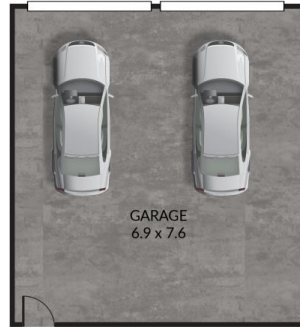
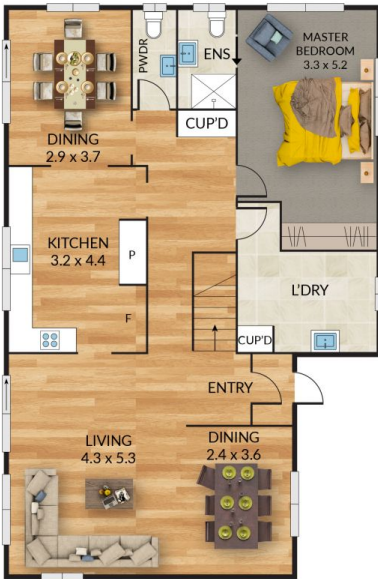
[For full version visit the website](https://www.wilsonbritten.com)

Internal 227m² External 43m² Total 202m²

1 Lakeside Close, **Bonnells Bay**

4 x  2 x  2 x 

NORTH



WILSONBRITTEN

NOTE: Every precaution has been taken to verify the accuracy of the above details. However, prospective purchasers are advised to make their own enquiries.